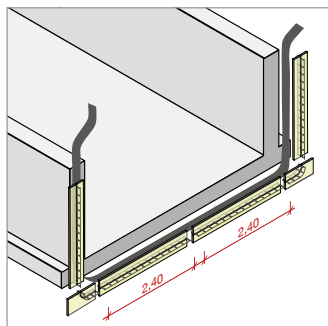


# Formulaire de commande - Stremaform® pour Joint de dilatation

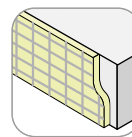


Ce formulaire a été créé pour documenter vos projets et études et permettre de répondre efficacement et rapidement à vos demandes. Merci de le retourner à l'adresse ci-dessous afin que nous puissions vous établir un devis :

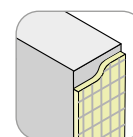
commercial@maxfrank.fr

Nom chantier : .....  
 Adresse : .....  
 Contact : .....

## Type de joint

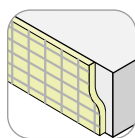


Dalle/Radier

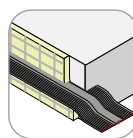


Voile

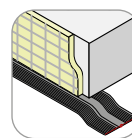
## Etanchéité



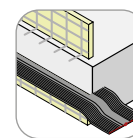
sans Waterstop



Waterstop PVC interne

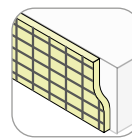


Waterstop PVC externe

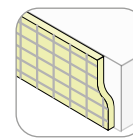


Waterstop PVC interne arrêt en 2 parties

## Type de mailles



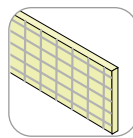
Acier brut (standard)



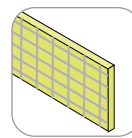
Galvanisé

## Type de JD et Matériau

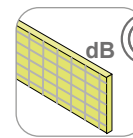
Ep. : 20 mm (standard)  
 30 mm  
 ..... mm  
 (multiple 10 mm)



Styrodur® (standard)

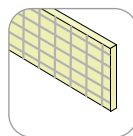


Laine minérale

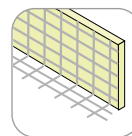


Isolant phonique

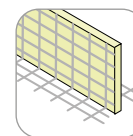
## Type de renforts de l'arrêt coffrant



sans (standard)

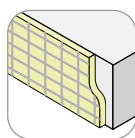


1 côté en L

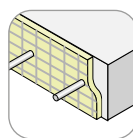


2 côtés en L

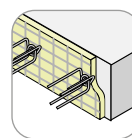
## Goujons (Reprise de charges)



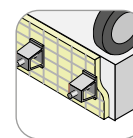
sans



avec goujons simples Egcodübel

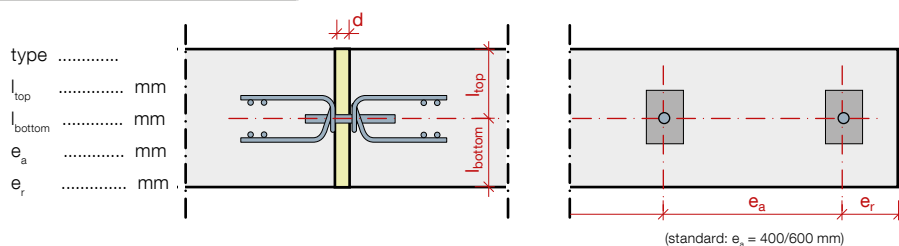


avec goujons Egcodorn®

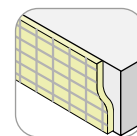


avec goujons Egcodorn® DND pour charges dynamiques

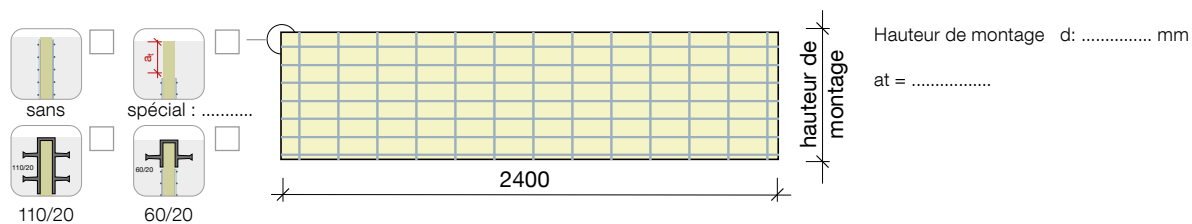
## Goujons position/entraxe



# Formulaire de commande - Stremaform® pour joint de dilatation - Dalle/Radier - sans Waterstop



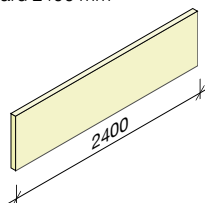
## Hauteur de montage et partie haute



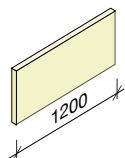
## Éléments

Standards (à couper sur site)

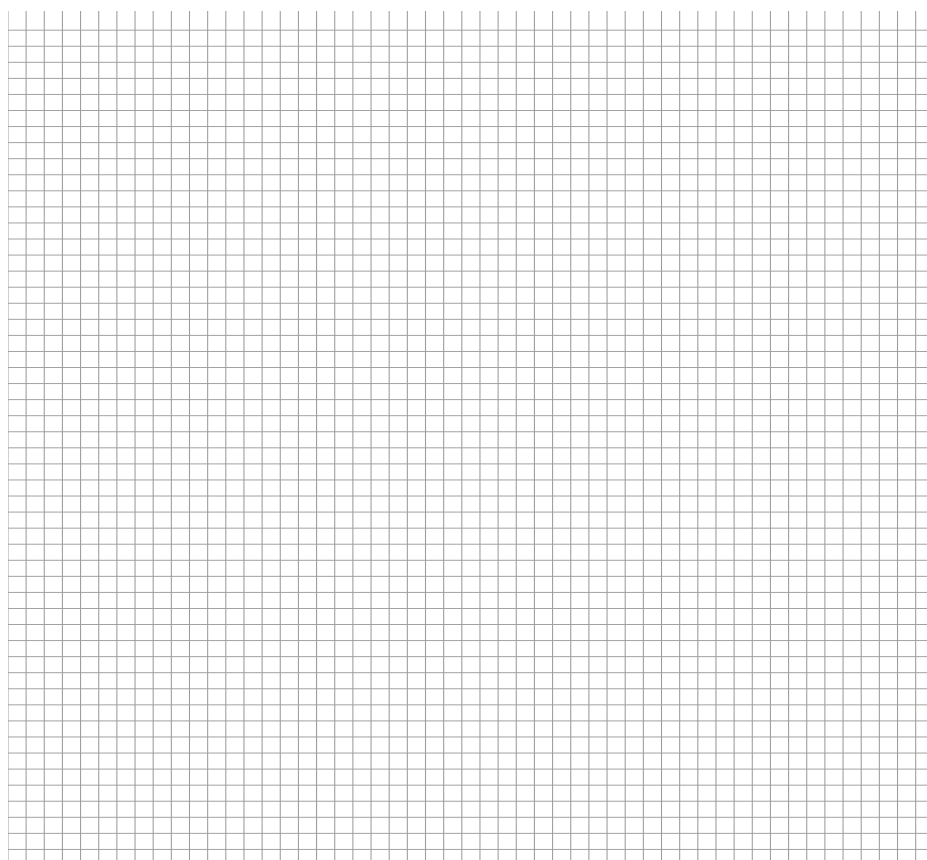
① Standard 2400 mm



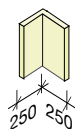
② Standard 1200 mm



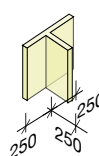
x<sub>1</sub> ..... mm  
 x<sub>2</sub> ..... mm  
 x<sub>3</sub> ..... mm



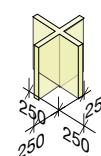
③ Cornière d'angle



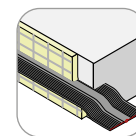
④ Élément en T



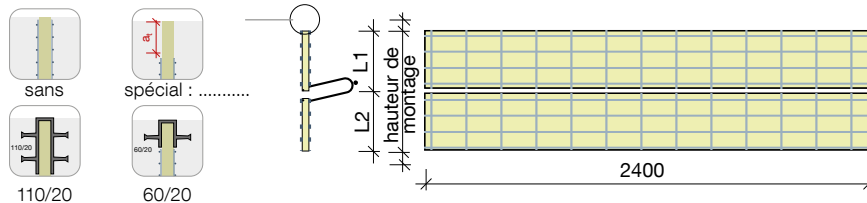
⑤ Croix



# Formulaire de commande - Stremaform® pour joint de dilatation - Dalle/Radier - avec cage pour Waterstop



## Hauteur de montage et partie haute



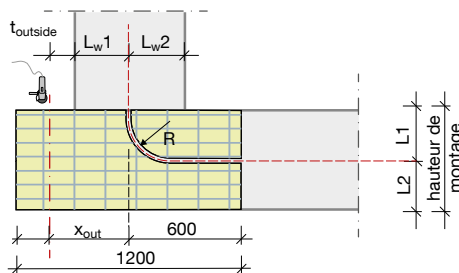
Hauteur de montage d: ..... mm

Waterstop centré : oui non

L1 : ..... mm

L2 : ..... mm

## Élément de transition Voiles



### Dimensions Voiles

$t_{outside}$  ..... mm  
 $L_{w1}$  ..... mm  
 $L_{w2}$  ..... mm

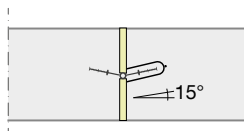
### Dimensions Radier

$X_{out}$  ..... mm

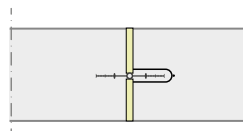
### Rayon de courbure R

(standard) 150 mm .  
 200 mm 250 mm .

## Waterstop



Incliné (standard)



Droit (spécial)

### Modèle de Waterstop

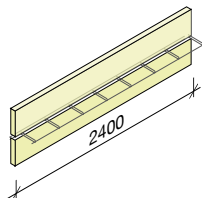
Fabricant : .....

Type : .....

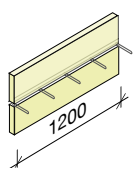
## Éléments

Standards (à couper sur site)

① Standard 2400 mm

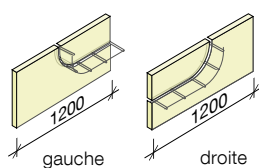


② Standard 1200 mm

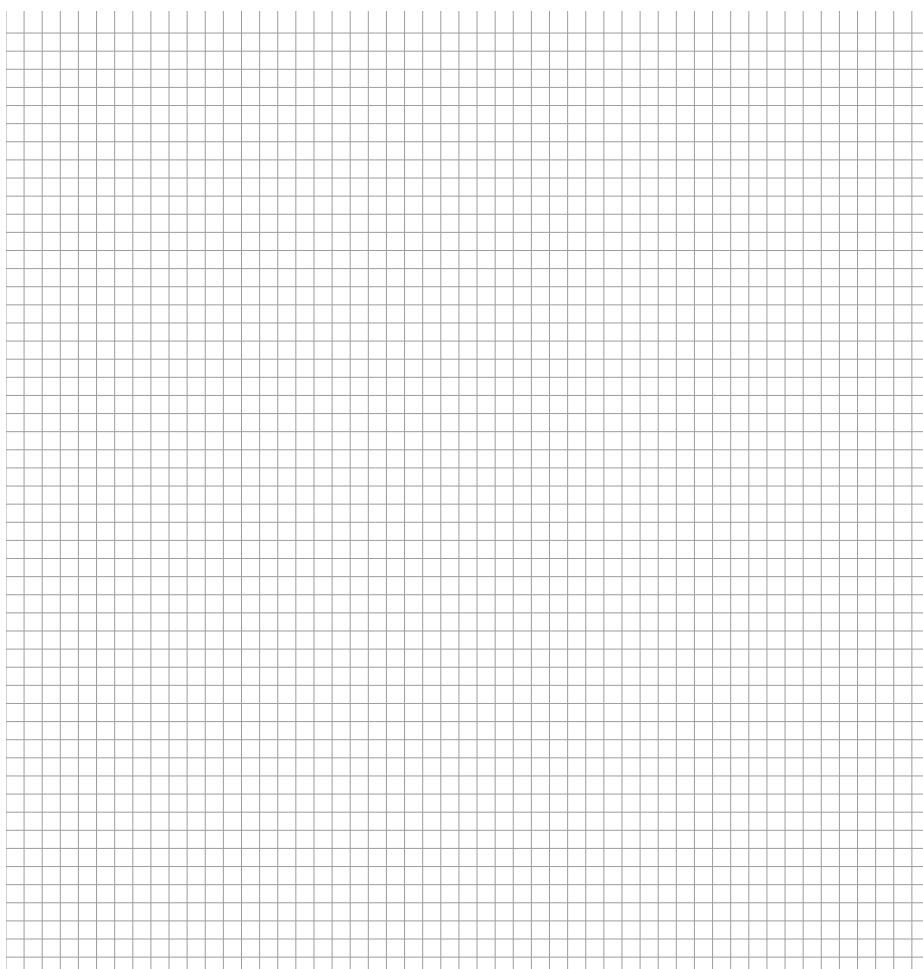
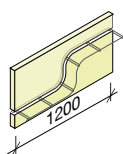


$x_1$  ..... mm  
 $x_2$  ..... mm  
 $x_3$  ..... mm

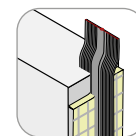
③ Éléments de transition Voiles



④ Sur-mesure



# Formulaire de commande - Stremaform® pour joint de dilatation - Voiles



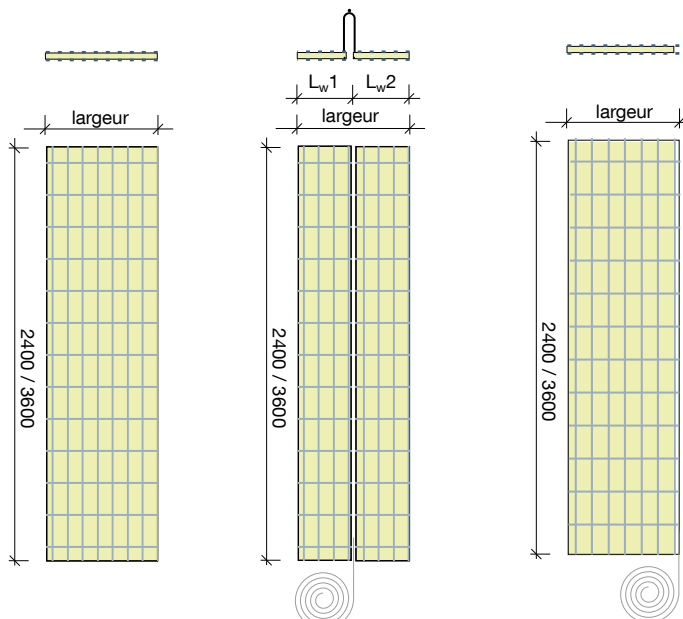
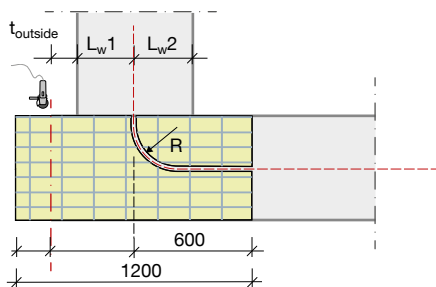
## Croquis éléments / dimensions

Largeur d: ..... mm

Waterstop centré : oui non

Distance gauche ( $L_{w1}$ ) : ..... mm

Distance droite ( $L_{w2}$ ) : ..... mm



sans Waterstop

avec cage pour Waterstop interne

avec cage pour Waterstop externe

## Extrêmités

extérieur :

intérieur :



sans

spécial : .....

sans

spécial : .....



110/20

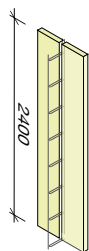
60/20

110/20

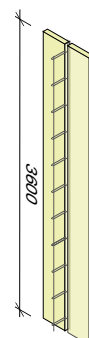
60/20

## Éléments

① Standard 2400 mm



② Standard 3600 mm



(longueurs spéciales > 300 mm)

