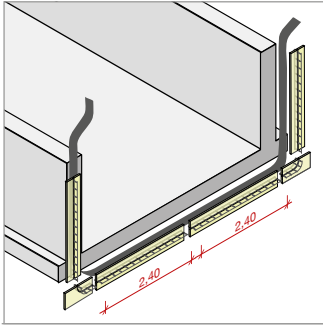


Order form - Stremaform® expansion joints

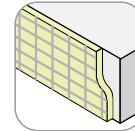


This order sheet has been designed to document your project requirements quickly and efficiently. Please send form to the below address and we will provide a quotation for your requirements:

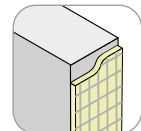
Max Frank GmbH & Co. KG
 Mitterweg 1
 94339 Leiblfing
 Tel. +49 9427 189-0
 info@maxfrank.com

Project name: Tender
 Site address: Order
 Site contact:

Type of construction

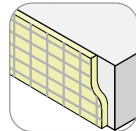


slab

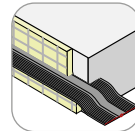


wall

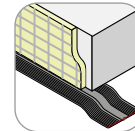
Waterproofing



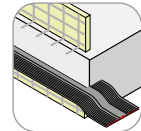
without waterstop



internal rubber/
PVC waterstop

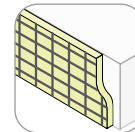


external rubber/
PVC waterstop

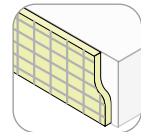


internal rubber/
PVC waterstop
two part cage

Steel type carrier mat



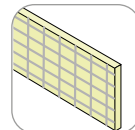
black steel
(standard)



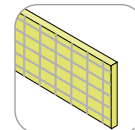
galvanised

Joint material

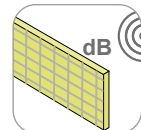
d: 20 mm (standard)
 30 mm
 mm
 (in 10 mm steps)



Styrodur®
(Standard)

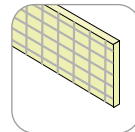


mineral wool

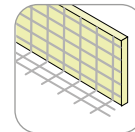


sound insulation
joint

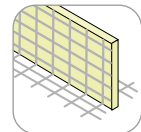
Elevation



none
(standard)

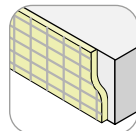


one-sided

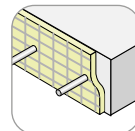


double-sided

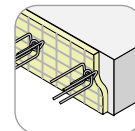
Design transverse force transmission



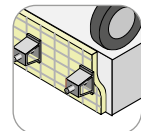
without shear
force transmission



with
Egcodubel
shear force dowel



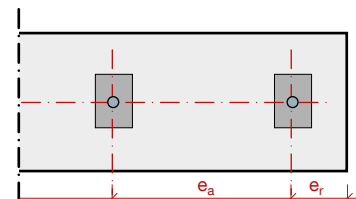
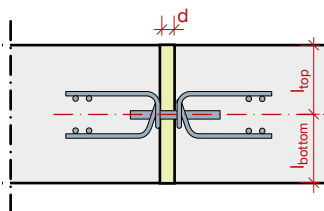
with Egcodorn®
shear force dowel



with Egcodorn®
DND for dynamic
loads

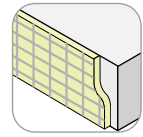
Shear force connection position/distance

type
 l_{top} mm
 l_{bottom} mm
 e_a mm
 e_r mm

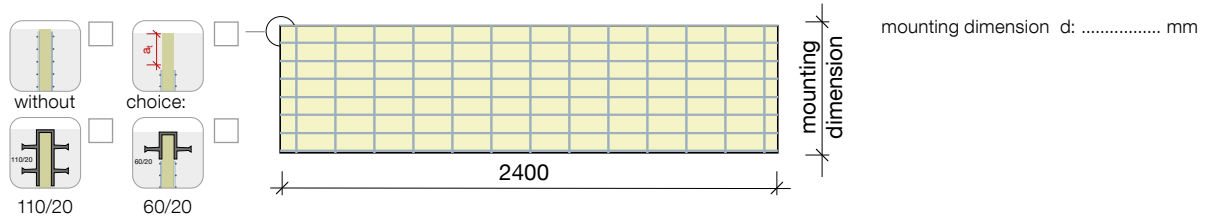


(standard: $e_a = 400/600$ mm)

Order form - Stremaform® expansion joints - slab without waterbar



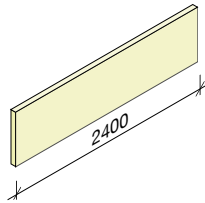
Mounting dimension and edge formation



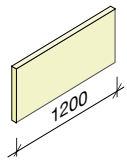
Units

standard forms of supply

- ① Standard 2400 mm

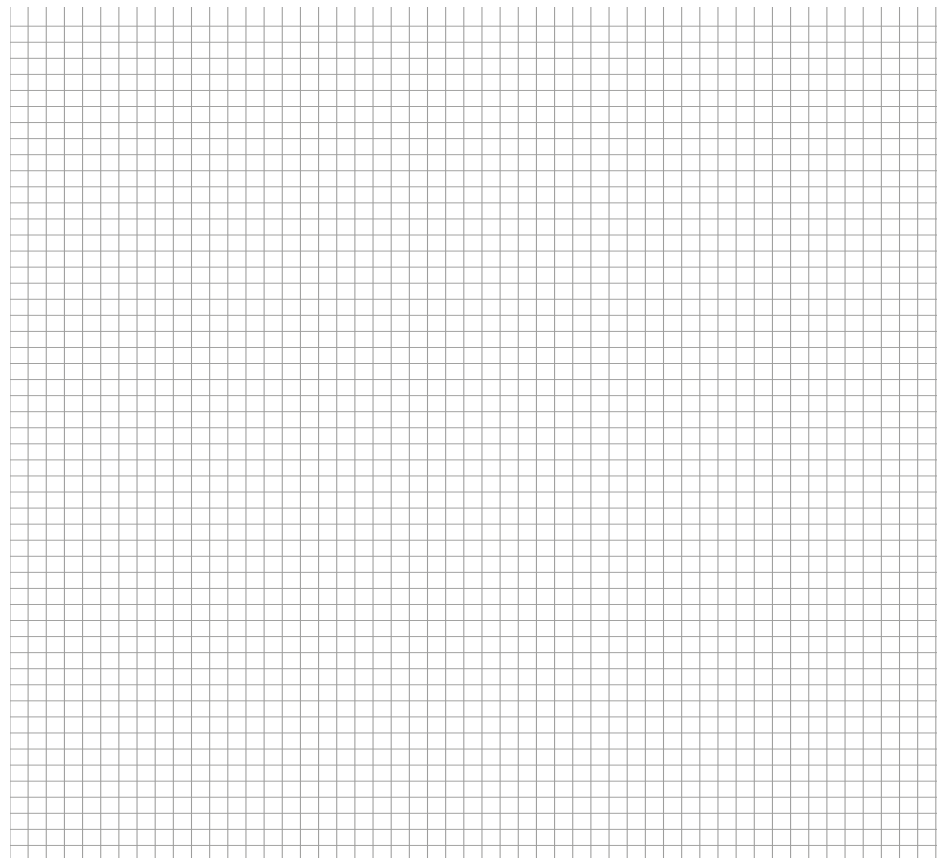


- ② Standard 1200 mm

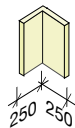


x₁ mm
 x₂ mm
 x₃ mm

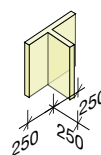
(units can be cut to length on site)



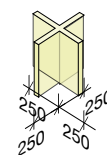
- ③ Corner element



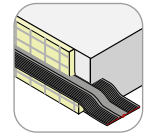
- ④ T-element



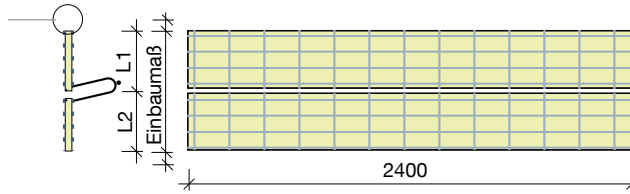
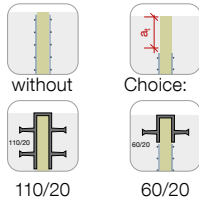
- ⑤ Crossing



Order form - Stremaform® expansion joints - slab with rubber/PVC waterbar cage

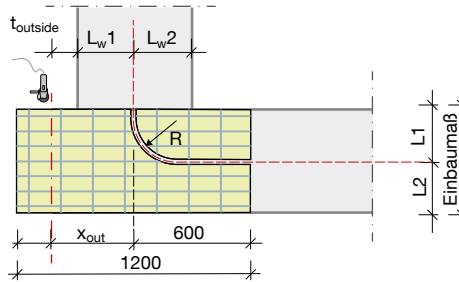


Mounting dimension and edge formation



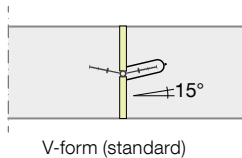
mounting dimension d: mm
 waterstop in center: yes no
 top distance (L1) mm
 bottom distance (L2) mm

Wall transition unit

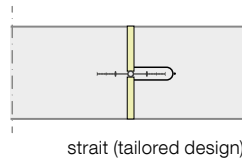


wall dimensions
 mm
 mm
 mm
slab dimensions
 mm
transition radius R
 (standard) 250 mm .
 350 mm .

Rubber/PVC waterstop



V-form (standard)



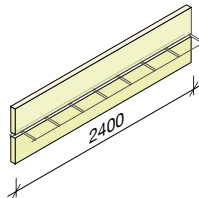
strait (tailored design)

type of rubber/PVC waterstop
 manufacturer
 type

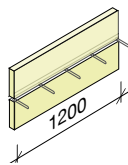
Units

standard forms of supply

① Standard 2400 mm

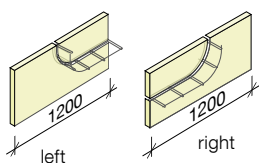


② Standard 1200 mm

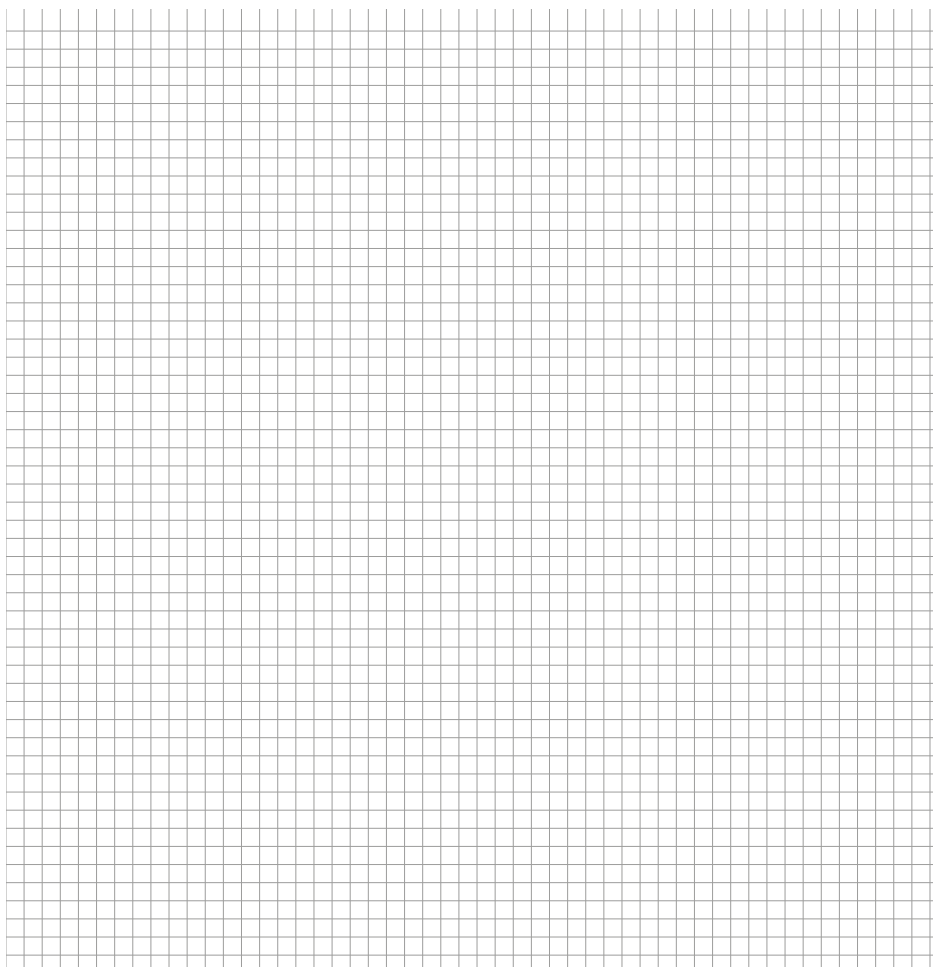
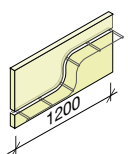


x₁ mm
 x₂ mm
 x₃ mm
 (units can be cut to length on site)

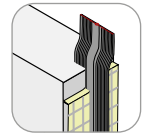
③ Wall transition unit



④ Height offset



Order form - Stremaform® expansion joints wall



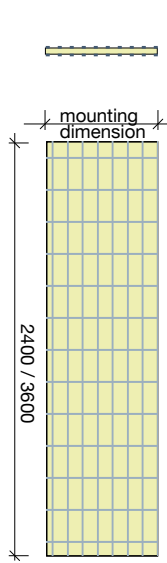
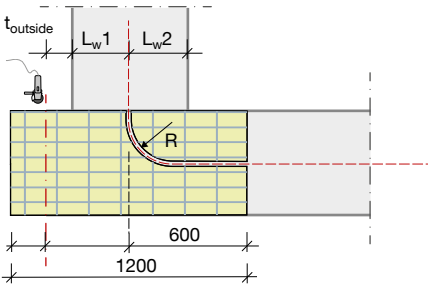
Element layout / mounting dimension

mounting dimension d: mm

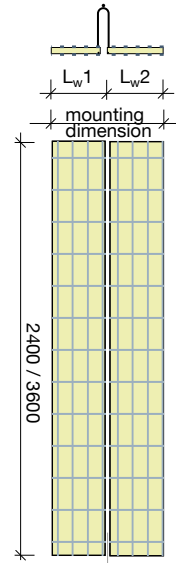
waterstop in centre: yes no

distance left (L_w1) mm

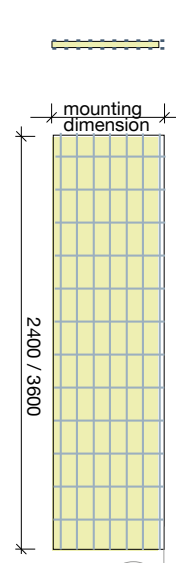
distance right (L_w2) mm



without waterstop



with rubber/PVC water bar cage waterstop



for external rubber/PVC waterstop

Edge formation

outside:



110/20



60/20



inside:



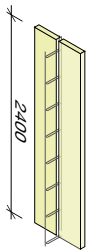
110/20



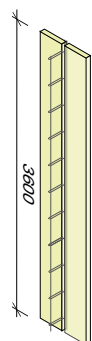
60/20

Units

① Standard 2400 mm



② Standard 3600 mm



(special lengths > 300 mm)

