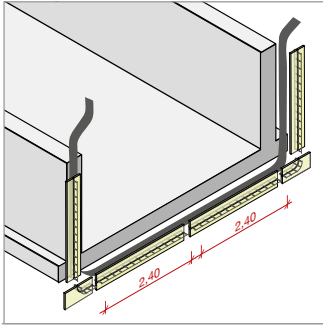


Bestellhilfe - MAX FRANK Stremaform® - Dehnfuge



Folgende Bestellhilfe dient zur einfachen und schnellen Abstimmung Ihrer notwendigen Produktanforderungen. Bitte senden Sie dieses für Projekte an die unten genannte Adresse, wir erstellen Ihnen kurzfristig ein passendes Angebot:

MAX FRANK Group

Projekt:

Angebot

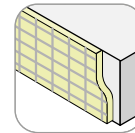
info@maxfrank.com

Ort:

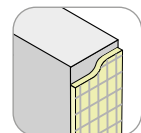
Bestellung

Kontakt:

Bauart

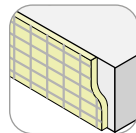


Platte

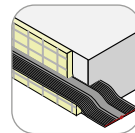


Wand

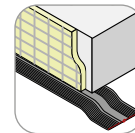
Abdichtungsvarianten (WU- Beton)



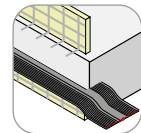
ohne Abdichtung



innenliegendes Fugenband

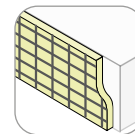


außenliegendes Fugenband

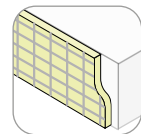


Fugenbandkorb zweigeteilt

Ausführung Trägermatte



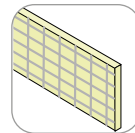
Schwarzstahl (Standard)



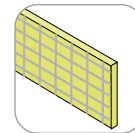
verzinkt

Fugenmaterial

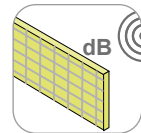
d: 20 mm (Standard)
30 mm
..... mm
(in 10 mm Schritten)



Styrodur® (Standard)

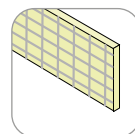


Mineralwolle

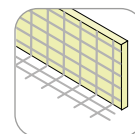


Schalltrennfuge

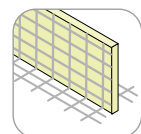
Aufständering



keine (Standard)

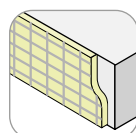


einseitig

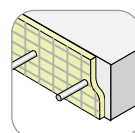


beidseitig

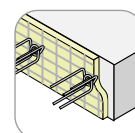
Ausführung Querkraftübertragung



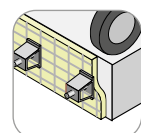
ohne Querkraftübertragung



mit Egco® Dübel



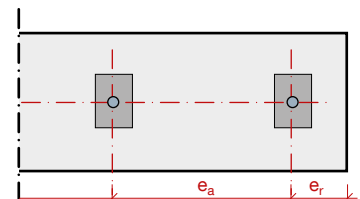
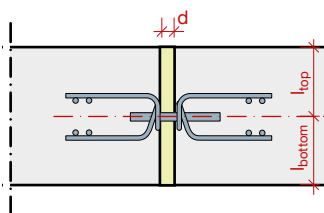
mit Egcodorn®



mit Egcodorn® DND für dynamische Lasten

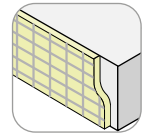
Querkraftverbindung Position/Abstand

type
l_{top} mm
l_{bottom} mm
e_a mm
e_r mm

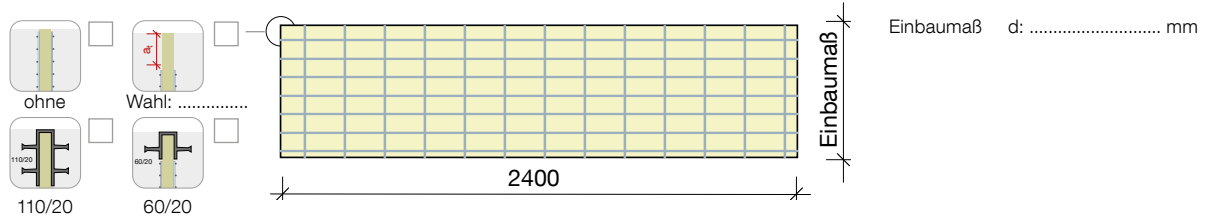


(Standard: e_a = 400/600 mm)

Bestellhilfe - MAX FRANK Stremaform® Dehnfuge - Platte ohne Abdichtung



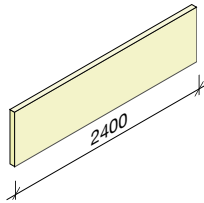
Einbaumaß und Kantenausbildung



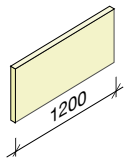
Gesamtausführung

Lieferformen (Standard)

① Standard 2400 mm

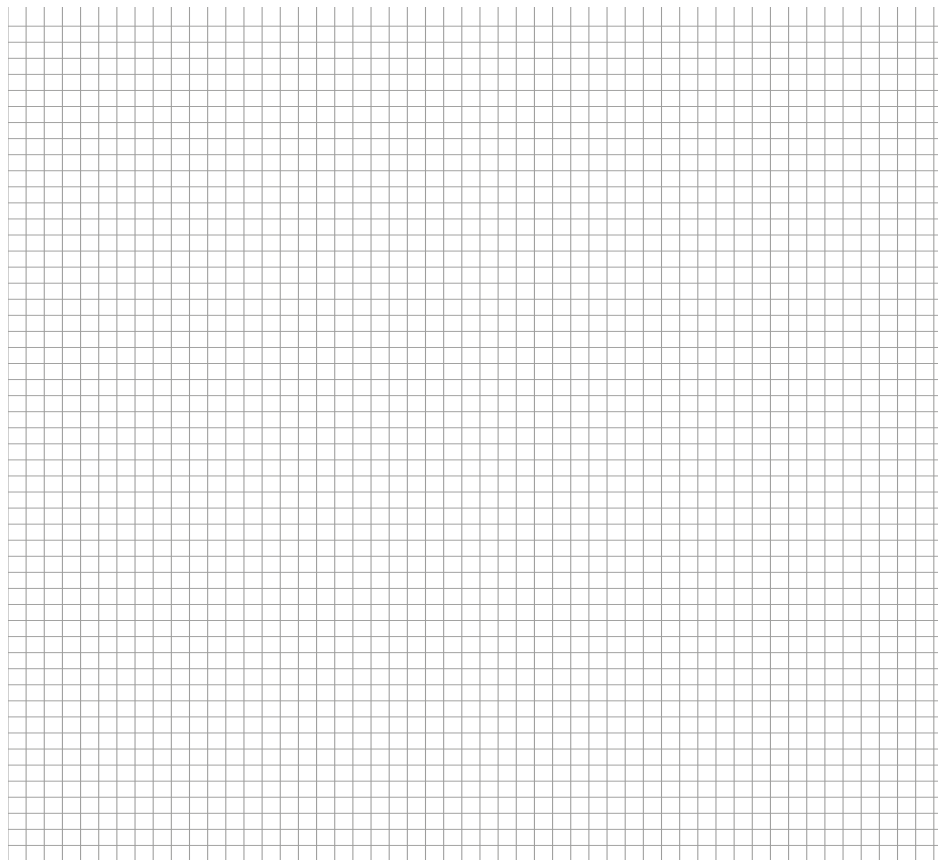


② Standard 1200 mm

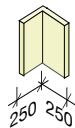


x₁ mm
x₂ mm
x₃ mm

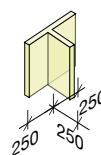
Längenzuschnitt ist
bauseits möglich



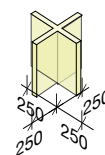
③ Eck-Formteil



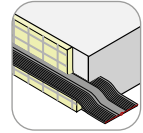
④ T-Formteil



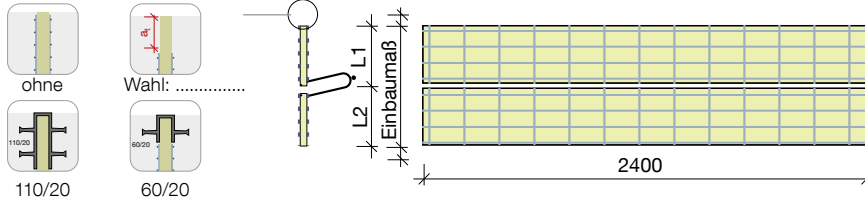
⑤ Kreuz-Formteil



Bestellhilfe - MAX FRANK Stremaform® Dehnfuge - Platte mit Fugenbandkorb

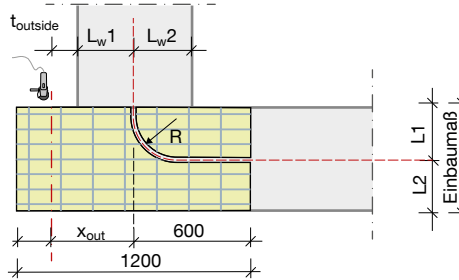


Einbaumaß und Kantenausbildung



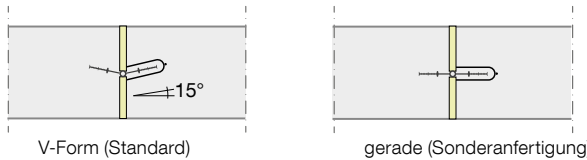
Einbaumaß d: mm
 Mittige Dichtungsebe: ja nein
 Abstand oben (L1) mm
 Abstand unten (L2) mm

Wandübergang



Wandmaße (für Anschluss)
 $t_{outside}$ mm
 L_{w1} mm
 L_{w2} mm
Bodenmaße
 x_{out} mm
Übergangsradius R
 (Standard) 250 mm .
 350 mm .

Fugenband

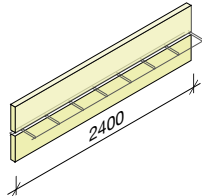


Typ des Fugenbands
 Hersteller
 Typ

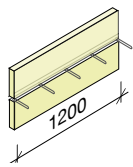
Gesamtausführung

Lieferformen (Standard)

① Standard 2400 mm

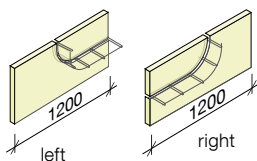


② Standard 1200 mm

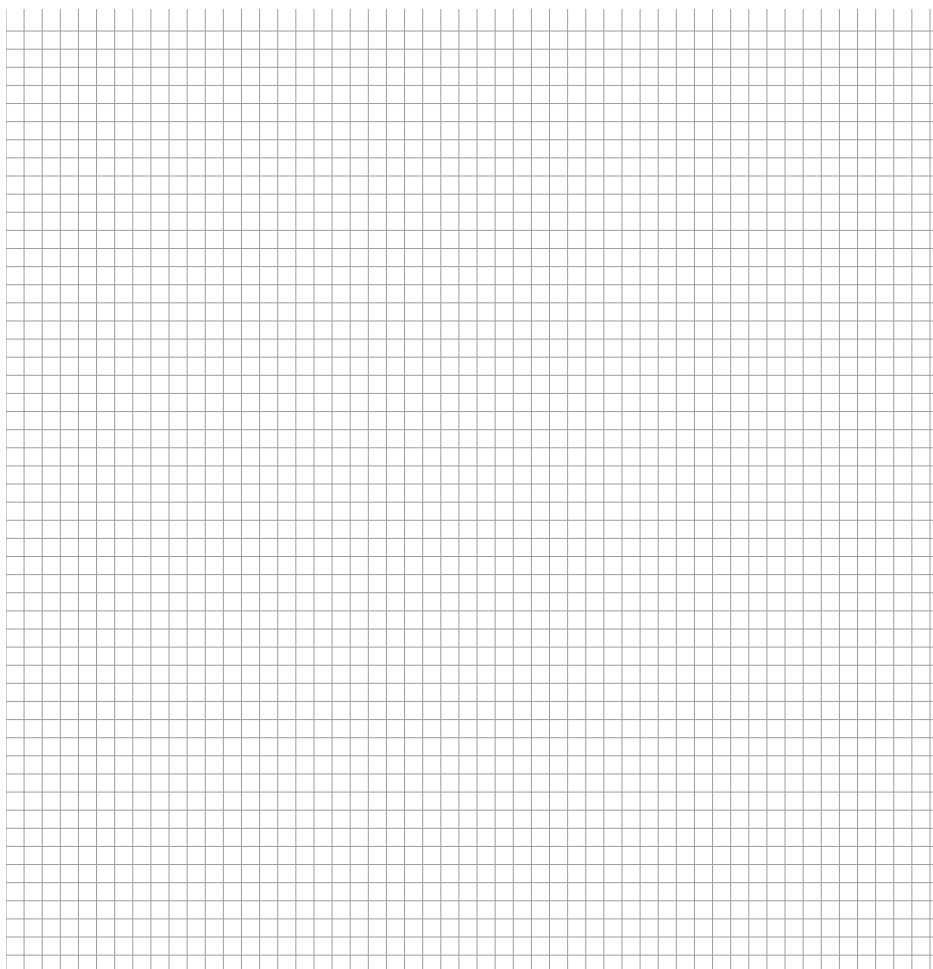
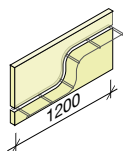


x_1 mm
 x_2 mm
 x_3 mm
 (Längenzuschnitt ist bauseits möglich)

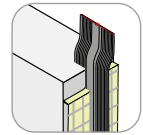
③ Übergang Wand



④ Höhengsprung



Bestellhilfe - MAX FRANK Stremaform® Dehnfuge Wand



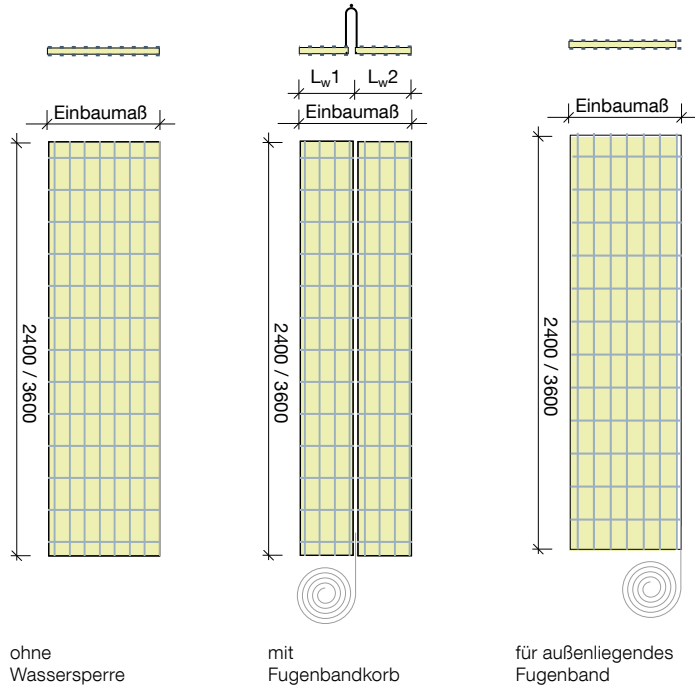
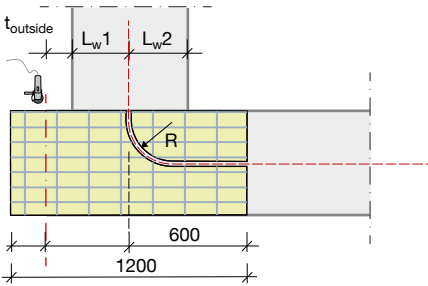
Elementaufteilung nach Einbaumaß

Einbaumaß d: mm

Mittige Dichtungsebe: ja nein

Abstand links (L_{w1}) mm

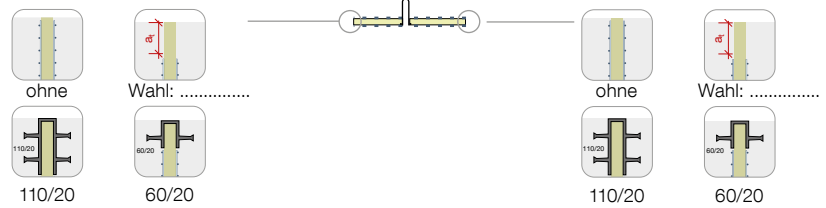
Abstand rechts (L_{w2}) mm



Kantenausbildung

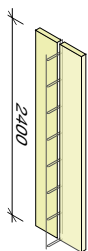
Außenseite:

Innenseite:

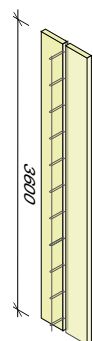


Gesamtausführung

① Standard 2400 mm



② Standard 3600 mm



(Sonderlängen > 300 mm)

