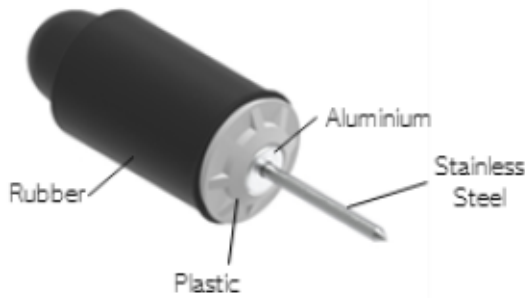




Rivestop

Watertight sealing system for formwork voids

RIVESTOP STANDARD RANGE > 5 BAR PRESSURE



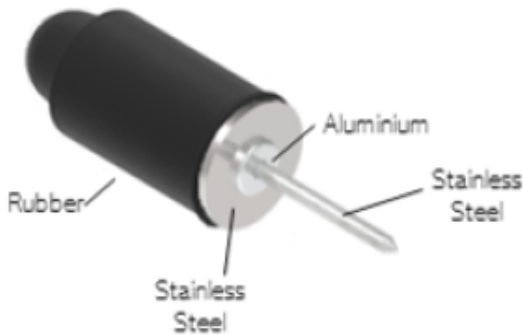
Article Code	Description	Diameter Hole (mm)	Indoor / Outdoor version
RS21033PS24	D21X33	22	Outdoor only
RS17048PS17	D17X48	18-21	Indoor Only
RS21048PS24	D21X48	22-24	Outdoor only
RS24050PS24 / 30	D24X50	25-28	Indoor and outdoor
RS27050PS30	D27X50	28-30	Outdoor only

((1) Finish in stainless steel washer with a price increase of 3,5%.

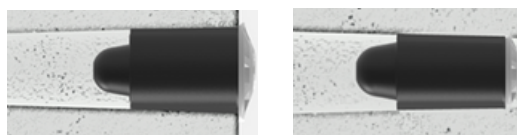
((2) Stainless steel washers allow versatility for indoor and outdoor applications.

RIVESTOP PREMIUM RANGE > 8 BAR PRESSURE

The piece complies with the water penetration depth under pressure according to DIN-EN 12390-8:2019-Part 10.



FINISHED IN EXTERIOR WALL INSTALLATION OR INSERTED IN THE WALL



CERTIFICATES



Watertight under pressure



Durability



Aging test



Hermetic against radon gas



Acoustic resistance



Fire resistance



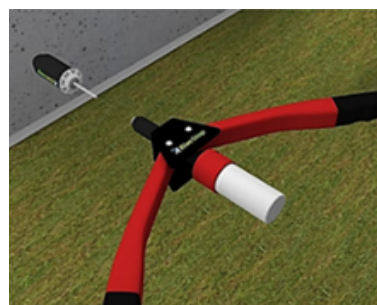
INSTALLATION PROCESS

Rivestop is distributed ready for installation in a very simple way

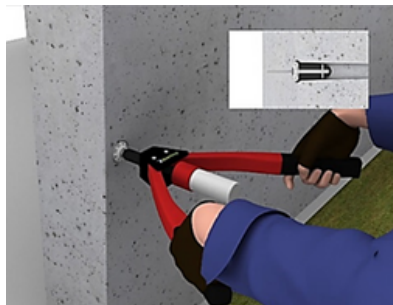


ELECTRIC RIVETING MACHINE *

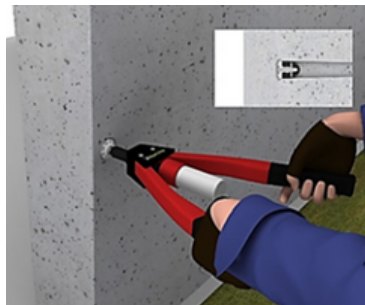
Approximately
420 holes / 1h



1. Insert Rivestop into riveting machine



2. Insert into the hole to be sealed



3. Rivet up to the rivet shank cutout.

MANUAL RIVETING MACHINE

Approximately
120 holes / 1h

INSTALLATION TOOLS

Description:

MANUAL RIVETING MACHINE



Article Code:

RMM001

LONG NOSE RIVETING MACHINE



RMMX001

ELECTRIC RIVETING MACHINE



RME001

*Consult with the Rivestop System, S.L. sales team for the correct reference to use in case of presence of chemical agents.

*The riveting tests have been carried out with a riveting machine with a torque of 13kN and a stroke length of 25 mm.



www.rivestop.com rivestop@rivestop.com

